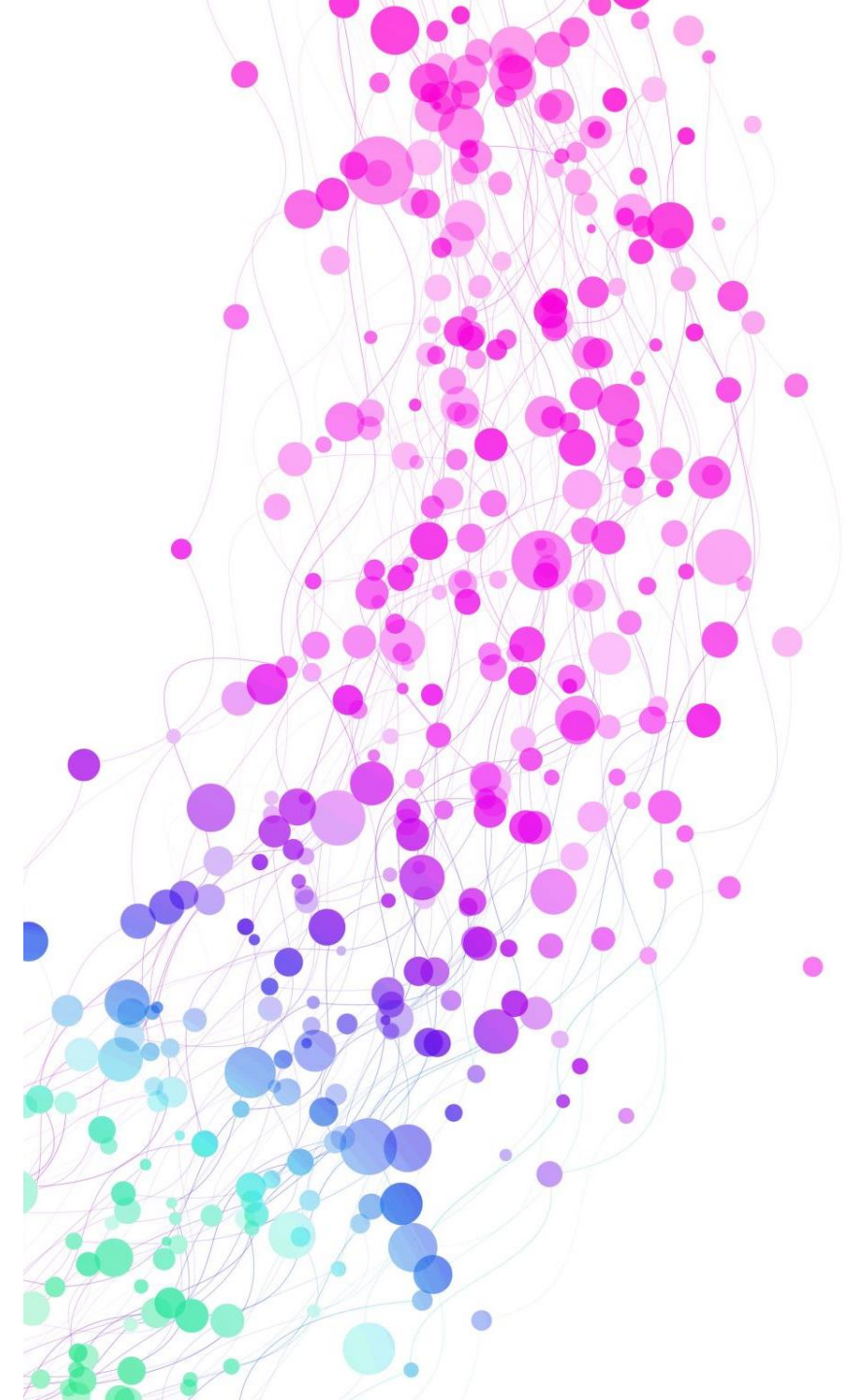


ASSEMBLAGE 2.0

Using a cigar box to create a self-portrait



VOCABULARY

Assemblage

Juxtaposition

Self-Portrait

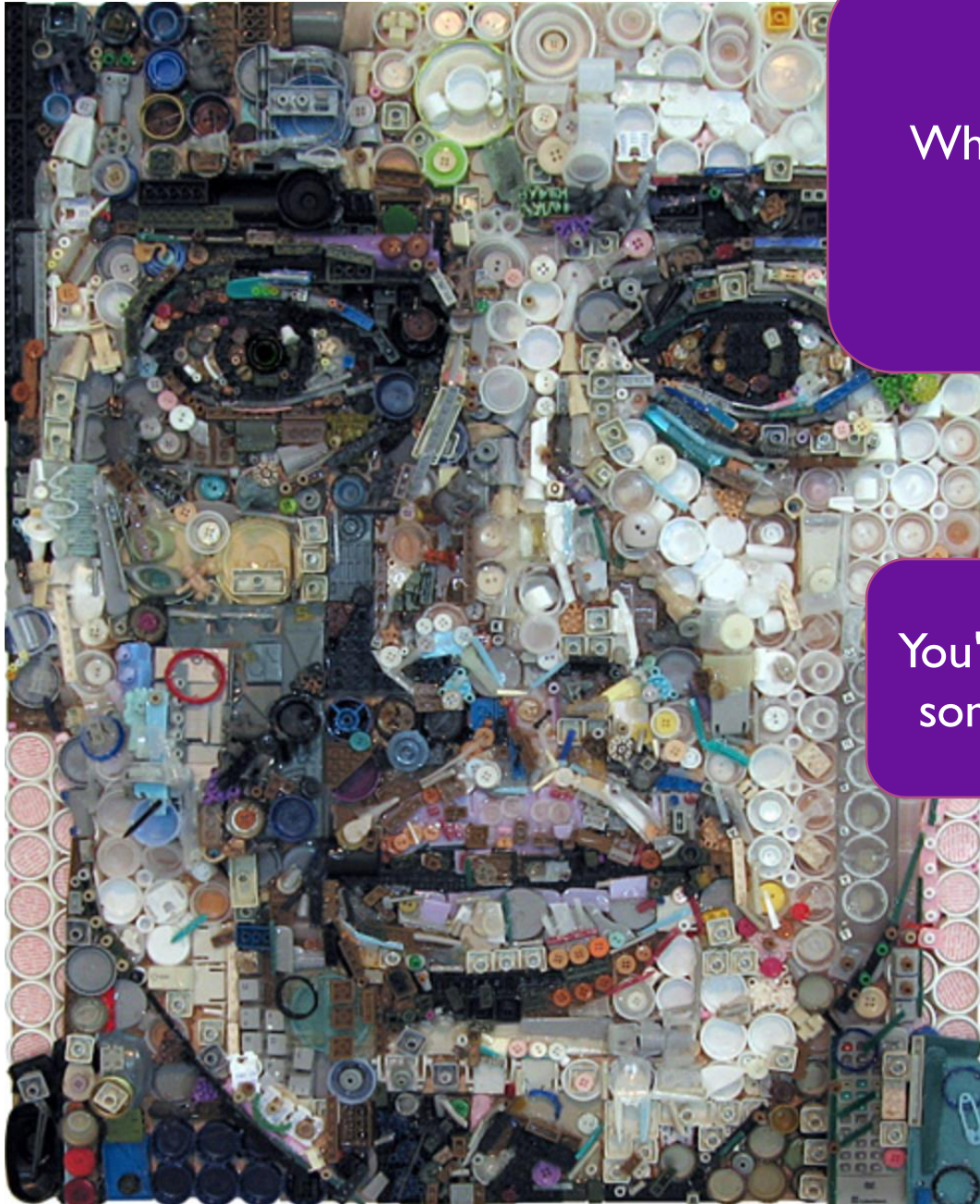
Where your eyes go when looking
at an artwork

- Color Scheme- Think of it as a color pattern based on the color wheel
- Stencil- Design cut out that helps produce images
- Surrounding- The space around something or someone



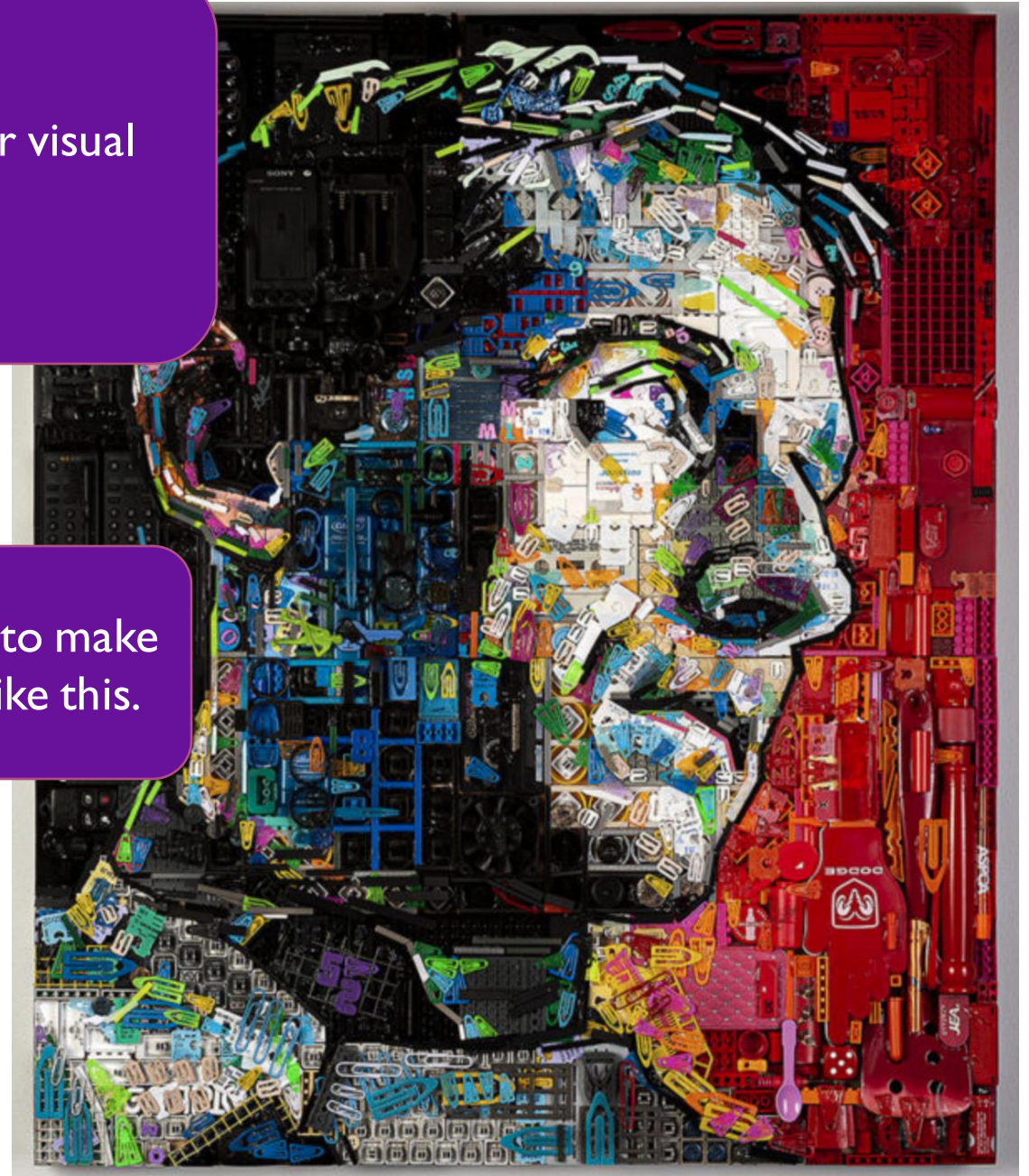
ZAC
FREEMAN

- Is from Jacksonville Florida
- He creates portraits using found objects.
- He uses his work to make a comment about consumerism
- He looks at it from a point of how objects can be relevant one day and completely forgotten the next



What is your visual path?

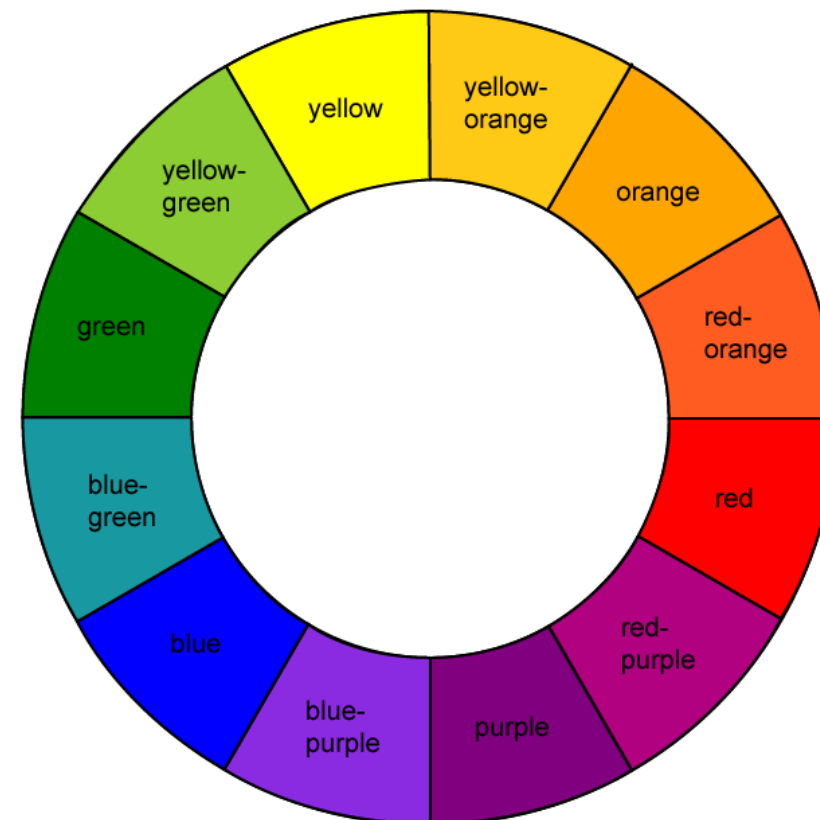
You're going to make something like this.



COLOR SCHEME

- Color Pattern you get by using the color wheel

Take 5 minutes to produce a color scheme using your color wheel

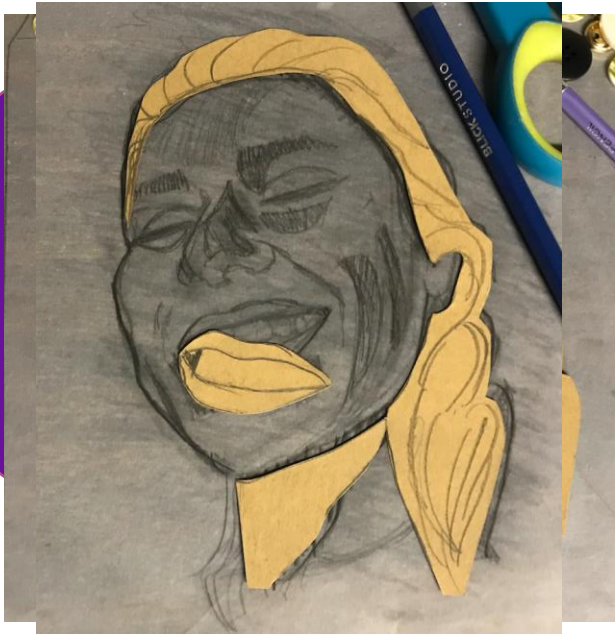
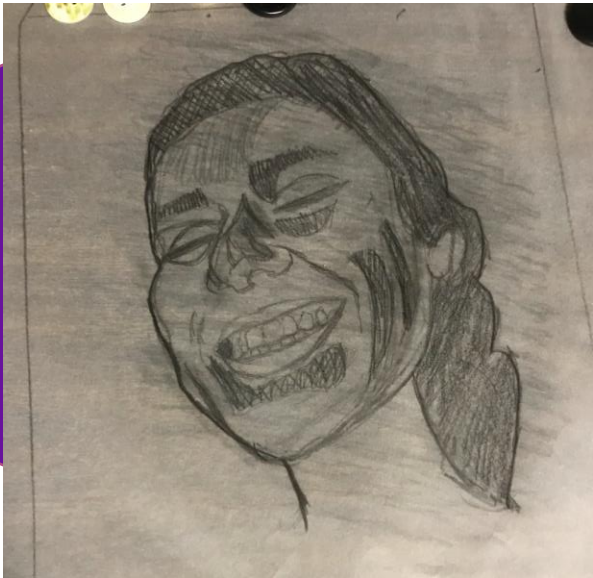


SILHOUETTE STENCIL

- Design cut out used to produce an image



MAKING YOUR STENCIL AND WHAT YOU ARE GOING TO USE



The smaller cutouts should be layered onto the main shape

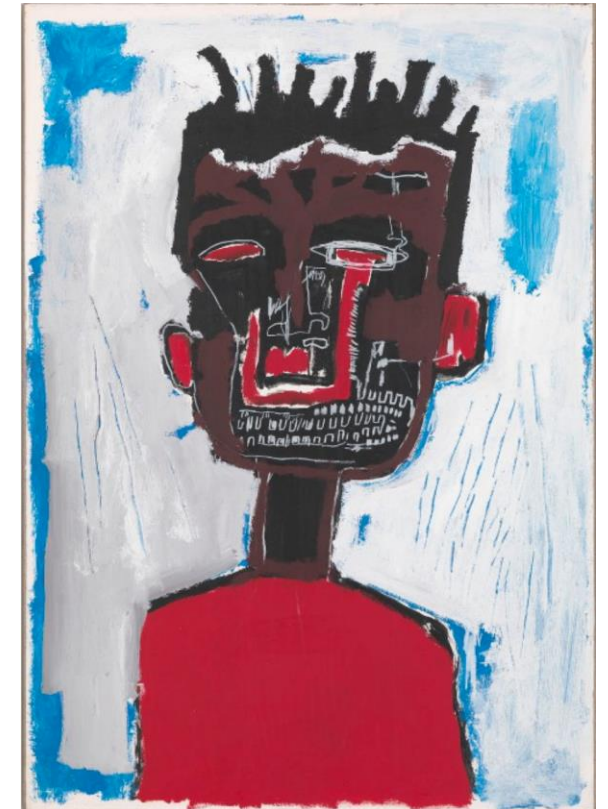
SURROUNDING

- The space around something or someone
- Basically, the background



Describe the surrounding.

What will your surrounding look like?



ASSEMBLAGE BOX-PORTRAIT

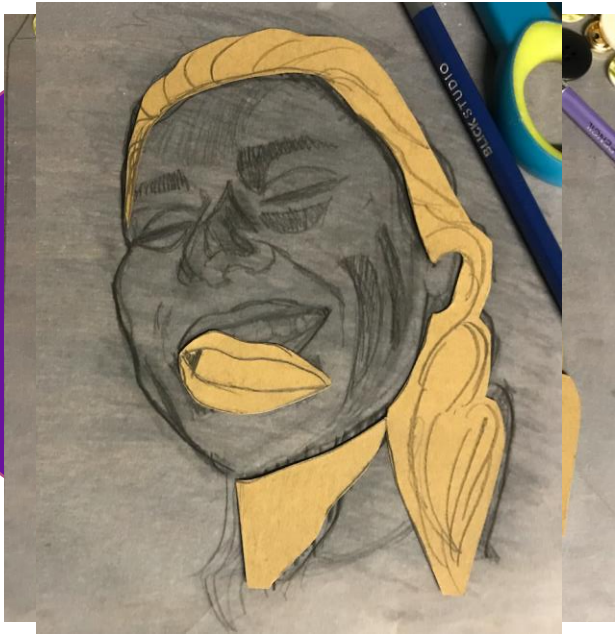
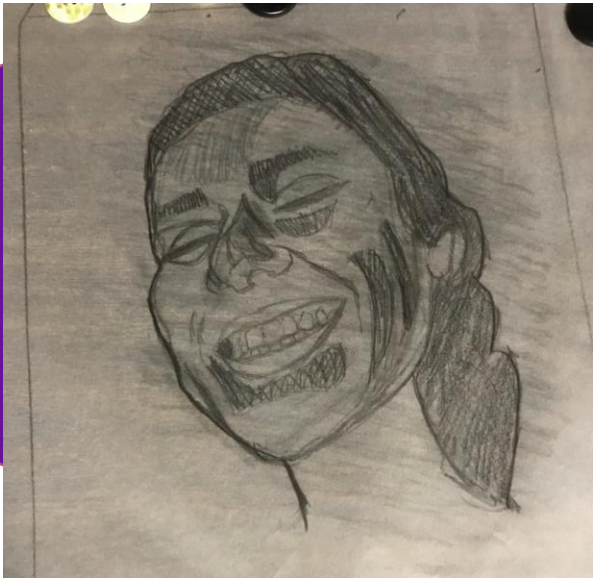
- You are going to produce a self-portrait using a cigar box
- You are going to going to make a silhouette stencil to keep track of the basic shapes
- You are going to pick a color scheme to use for your portrait
- You can organize your objects by color on your stencil or you can paint all the objects that share the same shape one color or whatever may work for you
- I'm going to provide you with items to fill BUT YOU will need to bring in an item from your personal life into the assemblage piece
 - EX. If you drink water or Gatorade everyday repurpose the bottle into your assemblage piece if not the bottle then the bottle caps
 - If you have a lot of clothes that you don't wear repurpose what you're not going to wear into your assemblage piece

HOT GLUE GUN ETIQUETTE

- Plug in your glue gun, let it heat up.
- Make sure you have glue sticks for when you run out.
- Do not touch the nose of the glue gun, the glue is hot and you will get burned. I have gotten blisters from accidentally touching the nose of the glue gun.
- Do not sit the glue gun on its side it must be upright.

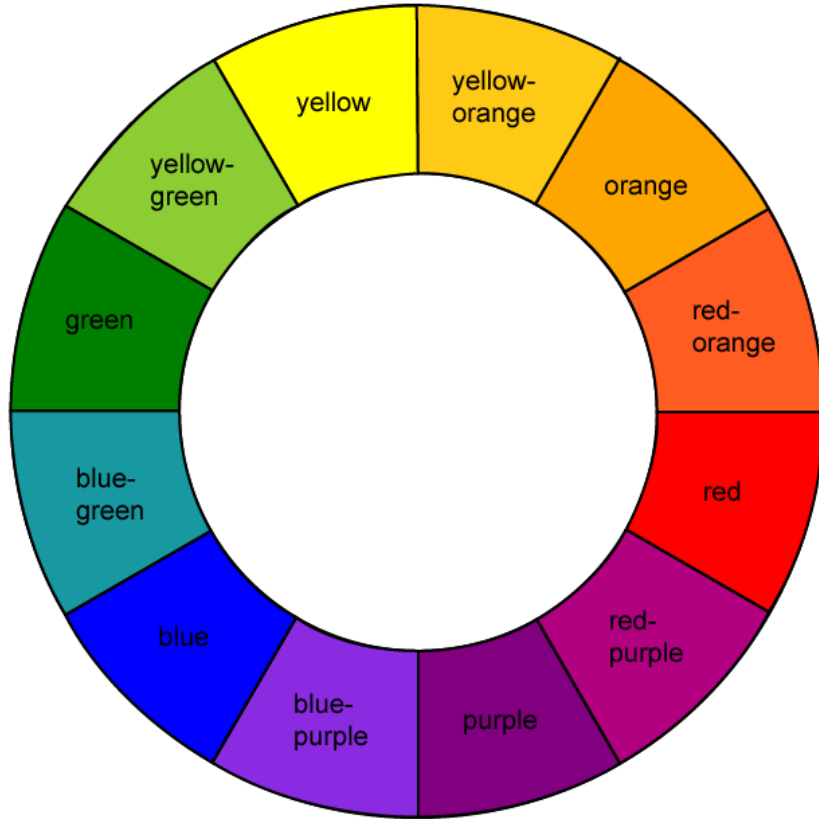


MAKING YOUR STENCIL AND WHAT YOU ARE GOING TO USE



The smaller cutouts should be layered onto the main shape

ASSEMBLAGE BOX PROCESS WORK SHEET



Who is the Portrait of?

What Will Your Surrounding
Look Like?

What Color Scheme Did You
Choose?
Name of
Scheme:
Colors:

What was an item from your life
that you brought into your
assemblage piece?

ASSEMBLING YOUR ASSEMBLAGE

- Use cork to help add depth to your assemblage and to have a layering look
- You're going to use hot glue to glue your stencil pieces together and to glue everything else to the box.

